

Kids



THINC
CHIROPRACTIC

EDUCATIONAL SERIES

Week 1

WEEKLY MEMORY VERSE

Take time this week to memorize this bible memory verse!

Record your child or family reciting the verse together and post on social media. Make sure to tag @thincchiropractic!

So God created human beings in his own image. In the image of God He created them; male and female He created them.

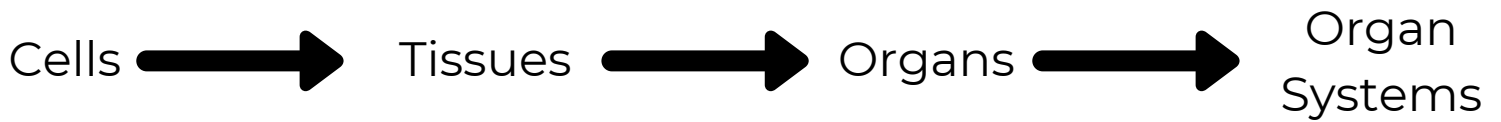
Genesis 1:27

YOUR LESSON

- 1** Watch Video 1 where Dr. Zane goes over today's lesson on the Human Body. View the video on our Facebook Page: www.facebook.com/thincchiropractic
- 2** Review the different types of cells, tissues and organs in the body and match them together! Write in your answers and share your answers with us!
- 3** Print out our Match + Glue Activity to learn more about where each body segment is located on the body. Once you have your Match + Glue activity completed, review the four areas of the spine.
- 4** Play a game of HEADSUP. Either print and cut out the cards provided, or make your own cards using paper and a writing utensil.

BONUS: Take a pic of your child's completed activities, or while they are completing them, post on social media and tag @thincchiropractic!

What Makes Up Your Body?



There are many kinds of cells in the human body, such as muscle cells, bone cells, skin cells, blood cells, etc. Cells are very, very tiny and are the smallest units of your body.

When you group cells together, they make up a tissue. There are four main tissues in the body – epithelium, muscle, connective tissue and nervous tissue.

Two or more kinds of tissues together form each of our organs, like your brain, heart, stomach, and lungs.

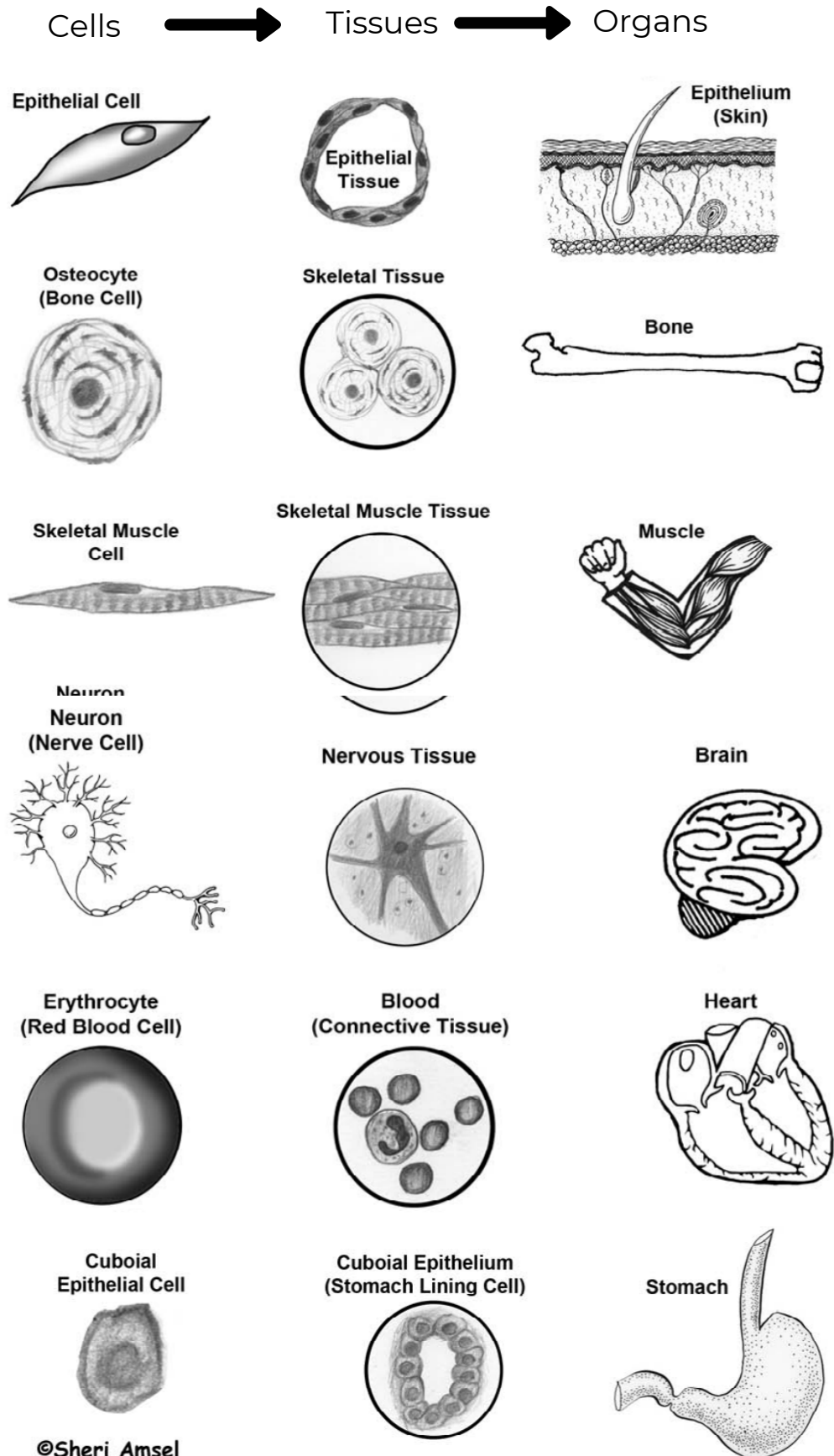
**Your entire body is just a
VERY VERY BIG group of CELLS...
TRILLIONS of cells!**

**Your goal is to keep all those cells
healthy!**

Check out the activity on the next few pages to learn what different cells look like in the body and match them to their tissue and organ groups!

What Makes Up Your Body?

Below are examples of different cell structures, what they look like when those cells form a tissue and then what those group of tissues look like when they form an organ.



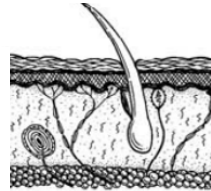
What Makes Up Your Body?

Now is your chance to match the the correct cell, to the correct tissue formation, to the correct organ! 1. Draw a line from the correct cell to the correct tissue. 2. Then draw a line from the correct tissue to the correct organ! 3. Then name that organ!
 (ANSWERS: SKIN, BONE, HEART, BRAIN, STOMACH, MUSCLE)

Cells

Tissues

Organs



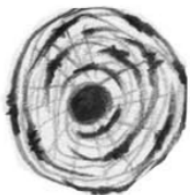
Organ



Organ



Organ



Organ



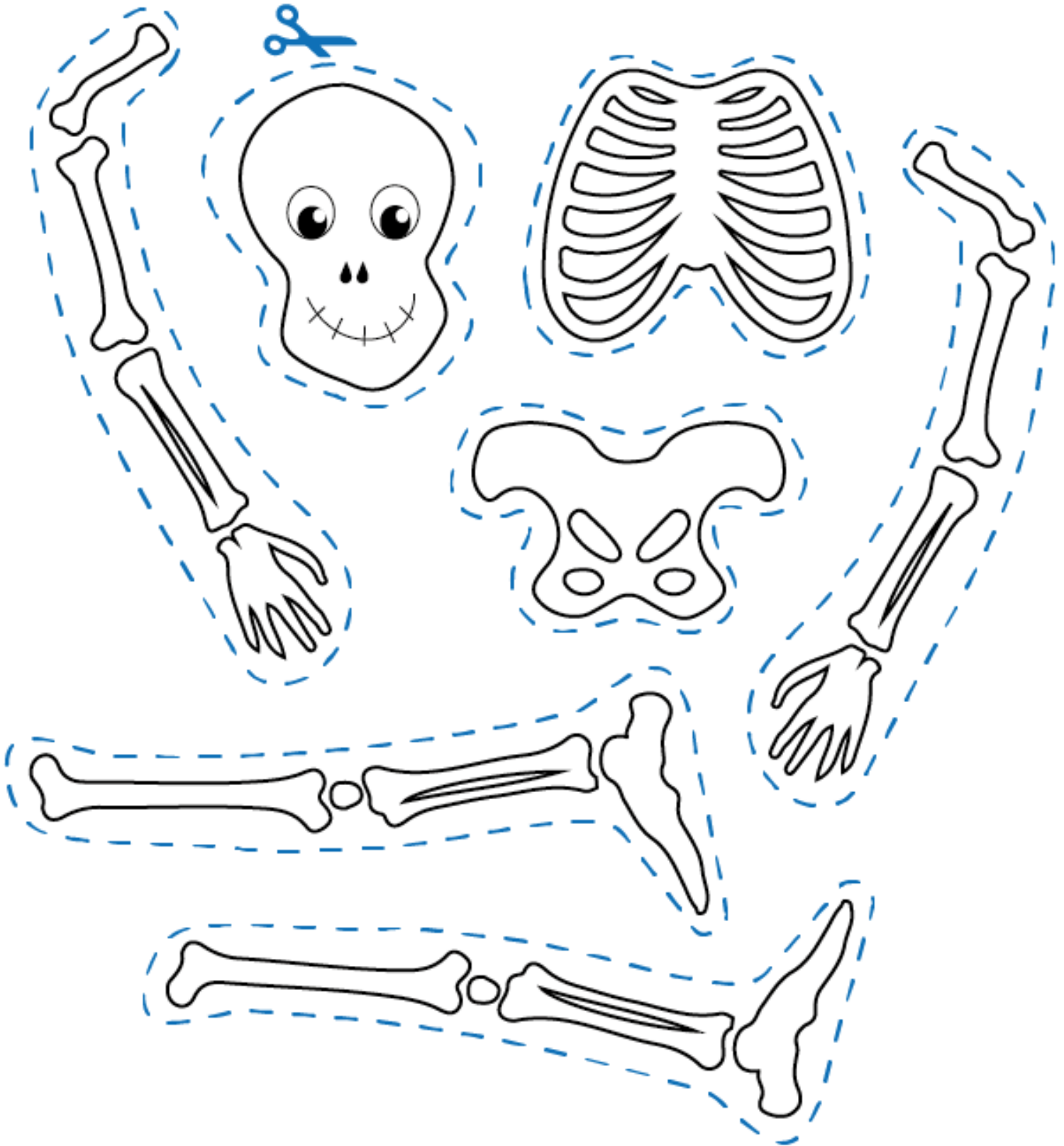
Organ







Organ

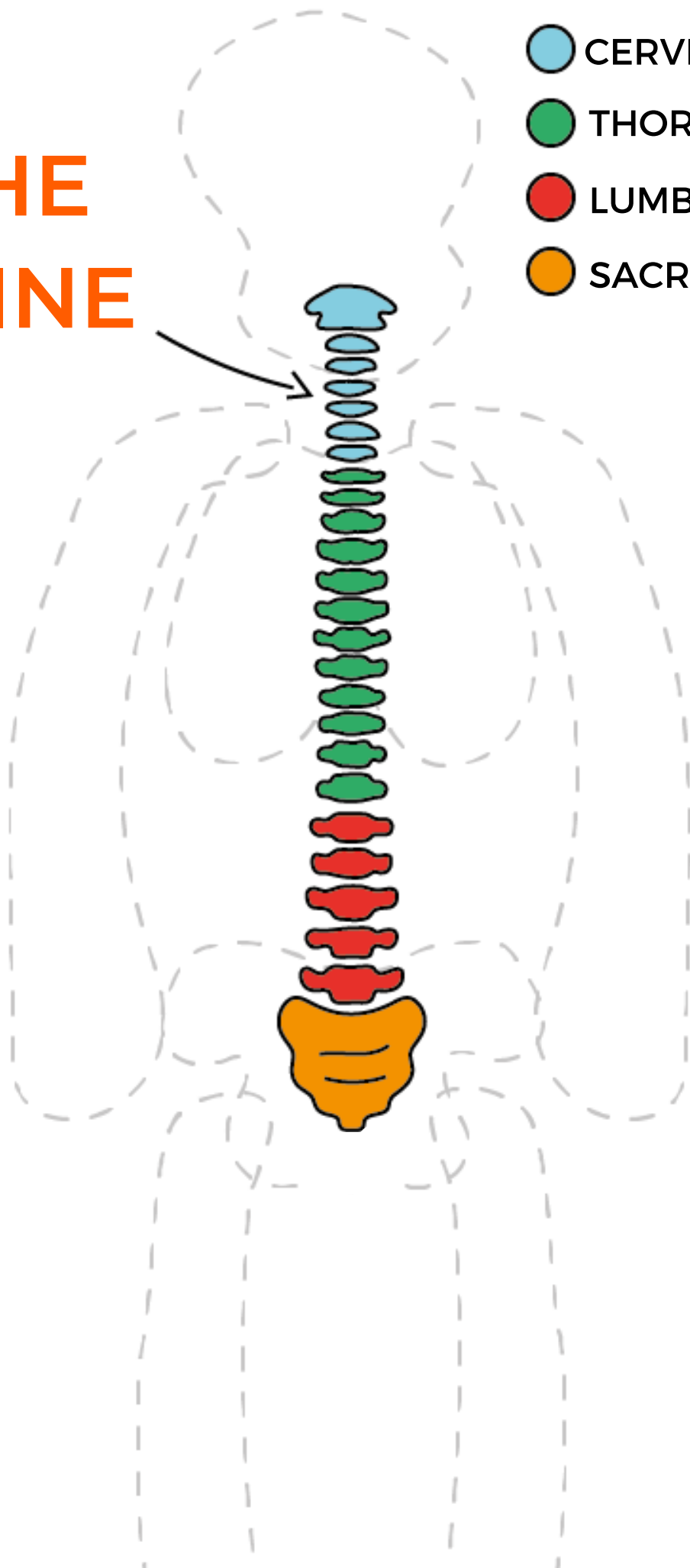
MATCH + GLUE

Cut out each segment of the body below and glue them into the correct area of the body on the next page.



THE SPINE

-  CERVICAL SPINE
-  THORACIC SPINE
-  LUMBAR SPINE
-  SACRUM



PLAY HEADSUP!

- Print and cut out the cards below to play HEADSUP. If you don't have a printer, then just grab some extra paper and a writing utensil or makers and create your own. Then cut them out.
- Set a timer for 30 seconds and have one player hold up a card to their forehead without looking at it.
- The other players will yell out clues for the first player. Clues should describe the function or placement of the body part. No pointing to the body part or saying the body part, only verbal clues are allowed! (HINT: we've given you a few clues below for you to use.)
- The first player will continue to guess what area of the body is on their card until correct or until they decide to pass.
- Whichever player has the most points at the end wins!

EARS

TOES

STOMACH

TOOTH

HAI R

KNEE

THUMB

SHOULDER

HIP

ELBOW

SKIN

FINGER

CHEST

LEG

NECK

HAND

EYES

FACE

ARM

HAND

NOSE

MOUTH

TONGUE

FOOT

THROAT CHEEKS

LUNGS HEART

BLADDER **HEEL**

BOWELS **LIVER**

JAW

ANKLE

WRIST

SPINE

MUSCLE CELL

BONE BRAIN

TISSUE BODY

ORGAN SYSTEM